

## Manager Applications

### What are the Manager Applications?

#### **Human Resources Manager**

*provides HR personnel, with little or no knowledge of INTERAC, instant access to the wealth of employee data kept in the INTERAC Payroll application. This is a great tool for managers to be able to access current employee data without having to get into or learn how to use the rest of the accounting system. HR Manager allows instant access to all the pertinent data from an intuitive and easy to use central control screen.*

***Job Manager** gives Project Managers and other management personnel real-time access to critical Job Cost data from a user friendly Central Control Screen. Its drill-down query routines retrieve summary data including billings, cash receipts, estimated cost, change orders, actual cost and committed cost for jobs and phases from Job Cost, Accounts Receivable and the Document Management System. Job Manager will calculate Revised Contract Amount, Percent Complete, and Over/Under Billings.*

***Equipment Manager** provides employees, with little or no INTERAC knowledge, real-time access to critical Equipment Cost data from a user friendly Central Control Screen. Its drill-down query routines retrieve summary Equipment history data, and will drill down to source entries from Equipment Cost and source documents from the Document Management System.*

### Why do I need them?

#### **Human Resources Manager**

*To save time in responding to employee information requests by making all the employee file information readily available online.*

*To provide personnel managers with an easy to use, "view only" interface to the information they need so they no longer need to call, interrupting someone in the payroll department, for updates.*

*So you can attach notes to individual records, keeping pertinent details or explanations as a reminder, or to be shared with other users.*

#### **Job Manager**

*To increase profitability by facilitating better educated project management decisions using the most current Job Cost information.*

*To provide managers with easy access to the information they need so that they no longer need to call, interrupting someone in the accounting department, each time they need an update.*

*To share documentation with the entire team, (even in remote offices or job sites) through an integrated link with the INTERAC Document Management System.*

#### **Equipment Manager**

*To increase profitability by facilitating better management decisions related to your equipment resources using the most current Equipment Cost information.*

*To enhance efficiency by making the most up to date Equipment Cost information readily available, to management, fleet managers, and shop foremen.*

*To help track and manage routine maintenance on your fleet of equipment.*

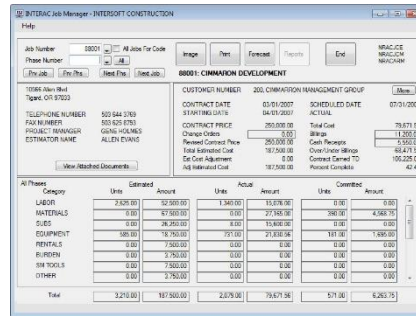
## What will the Manager Applications do for me?

**Human Resources Manager** makes it very easy to store and retrieve all sorts of employee information you need to keep on file. This view only application makes all the data accessible even to non-accounting users through a very intuitive main control screen.



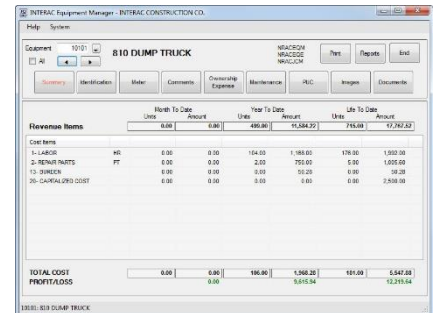
- It will save time finding and re-filing employee information by making it available online for instant recall.
- It will provide summary reports at the click of a button.
- When integrated with Report Manager, it also offers controlled access to all your Payroll custom reports, making it a streamlined resource for all your HR and Payroll data.
- When integrated with the Document Management System, it makes it possible to provide a complete electronic version of your employee files available online.
- It will allow you to quickly retrieve and email requested information directly to an employee or manager using the DMS email link.
- It makes it possible to share employee and payroll information with remote offices or clients.

**Job Manager** provides non-accounting users with an easy to use interface to the critical Job Cost information they need. It is intended to be a tool to provide the entire management team, both at the office and out on the job site, with a common interface to the most current information.



- It provides an entire job file in electronic format which can be made available to multiple users both at the office, and out in the field.
- The main screen provides a complete job summary, or selected phase summary with the ability to drill down to the detail transactions as needed.
- It keeps project documentation online through an integrated link to the INTERAC Document Management System.
- Store and retrieve pictures, drawings, and sketches related to the job through the integrated Images feature.
- Generate Job Cost reports based on the current data directly from Job Manager and through the integrated link with Report Manager.
- Export report data directly to a spreadsheet.

**Equipment Manager** is integrated with the INTERAC Equipment Cost system to provide a user friendly interface into the wealth of data maintained for equipment resources. It is intended as a tool for shop foremen, fleet managers, and other non-accounting managers who are responsible for monitoring revenue, costs, and maintenance on the fleet of equipment.



- It provides a quick Profit & Loss summary on each piece of equipment.
- It keeps track of all equipment revenue and expenses.
- It will track routine maintenance.
- Generate summary reports directly from Equipment Manager.
- Generate equipment reports directly from Equipment Manager through the interface with Report Manager.
- It integrates with the INTERAC Document Management System to store electronic documentation such as purchase/lease papers, registration, a copy of the title, accident reports, etc.
- It can store digital pictures of the equipment for identification, or to document damage and repairs.
- Export report data directly to a spreadsheet.

## What is Report Manager?

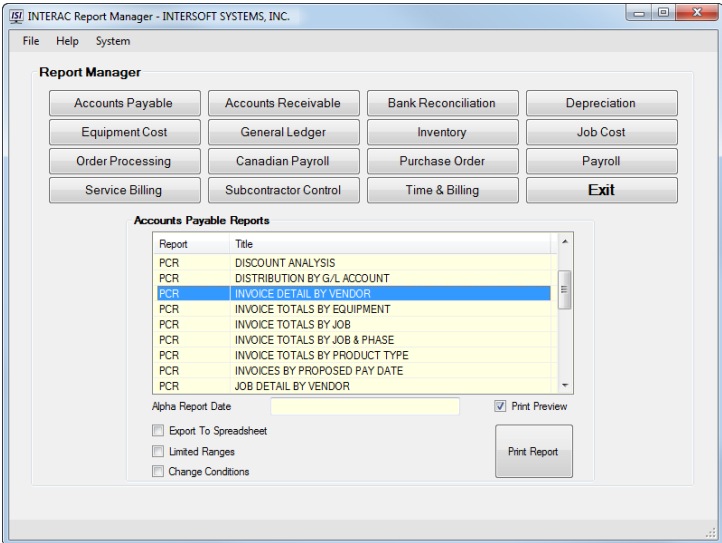
Report Manager is an exciting new product designed to provide people with little or no knowledge of INTERAC instant access to the powerful reporting options built into all of the INTERAC applications. This is a great tool for managers to access real-time data without having to get into or learn how to use the rest of the accounting system. Report Manager utilizes a very user friendly menu structure. Security settings control which applications and specific reports are made available to each user, allowing each user to have immediate access to their own customized set of reports.

## Why do I need it?

- To become even more efficient by making information available on demand directly from the INTERAC system.
- To provide real-time information access to the entire team, even in remote offices or job sites.
- To make it possible for team members to execute their own reports instead of disrupting someone in the accounting department each time they need an update.
- To save the cost of printing, distributing and disposing multiple copies of reports for quick review.

## What will Report Manager do for me?

- Report Manager is tightly integrated with the full INTERAC suite of applications and provides easy access to the extensive INTERAC reporting capabilities.
- Provide management easy and immediate access to the vital business information they need.
- Each user gets their own custom menu of available reports.
- INTERAC Security controls which applications are available, and which reports are assigned to each user assuring that users are only able to execute reports appropriate to their responsibilities.
- Enhance Cash Manager, Equipment Manager, HR Manager, and Job Manager applications with additional reporting capabilities.
- Allow reports to be previewed on-screen, printed, or sent directly to DMS.
- Export report data directly to a spreadsheet.
- When integrated with DMS, Report Manager can save the cost associated with printing, distributing, and filing reports by storing them in the DMS database and making them available for instant recall.



## INTERAC Manager Applications

### Place Your Order Now

Intersoft Systems is pleased to offer special promotional pricing of only \$100 per user, for new or additional manager applications licenses. Place your order now to take advantage of all the benefits of HR Manager, Job Manager, Equipment Manager and Report Manager.

INTERAC Manager Application Promotional Order				
Company Name:				
Address:				
City, State Zip				
Contact Name:				
Application	List Price / ALF	Qty to Add	Price	Total
HR Manager (Single User License)	\$250 / \$38		x \$100 ea.	
HR Manager (5 User License)	\$800 / \$124		\$500 ea.	
HR Manager (10 User License)	\$1600 / \$248		\$1000 ea.	
HR Manager (15 User License)	\$2400 / \$372		\$1500 ea.	
HR Manager (20 User License)	\$3200 / \$496		\$2000 ea.	
HR Manager (Unlimited User License)	\$4000 / \$620		\$2500 ea.	
Job Manager (Single User License)	\$250 / \$38		x \$100 ea.	
Job Manager (5 User License)	\$800 / \$124		\$500 ea.	
Job Manager (10 User License)	\$1600 / \$248		\$1000 ea.	
Job Manager (15 User License)	\$2400 / \$372		\$1500 ea.	
Job Manager (20 User License)	\$3200 / \$496		\$2000 ea.	
Job Manager (Unlimited User License)	\$4000 / \$620		\$2500 ea.	
Equipment Manager (Single User License)	\$250 / \$38		x \$100 ea.	
Equipment Manager (5 User License)	\$800 / \$124		\$500 ea.	
Equipment Manager (10 User License)	\$1600 / \$248		\$1000 ea.	
Equipment Manager (15 User License)	\$2400 / \$372		\$1500 ea.	
Equipment Manager (20 User License)	\$3200 / \$496		\$2000 ea.	
Equipment Manager (Unlimited User License)	\$4000 / \$620		\$2500 ea.	
Report Manager (Single User License)	\$250 / \$38		x \$100 ea.	
Report Manager (5 User License)	\$800 / \$124		\$500 ea.	
Report Manager (10 User License)	\$1600 / \$248		\$1000 ea.	
Report Manager (15 User License)	\$2400 / \$372		\$1500 ea.	
Report Manager (20 User License)	\$3200 / \$496		\$2000 ea.	
Report Manager (Unlimited User License)	\$4000 / \$620		\$2500 ea.	
<b>Total</b>				