

# Tandberg Data AccuGuard™

**Automated Backup and Recovery Software**

**Tandberg Data AccuGuard is a Windows®-based backup and recovery software. It is an easy-to-deploy solution that protects Windows servers and desktops on physical machines and in virtual environments.**

AccuGuard data protection software delivers reliable, automated backup and recovery utilizing a powerful data deduplication engine designed to increase your effective storage capacity, allowing users to store 20 times more data and run 10 times faster using the same storage compared to traditional backup methods.

## Traditional Data Protection

Companies continue to struggle with exponentially increasing data volumes, growing backup windows and limited resources. In many customer environments the same data is backed up over and over, wasting storage capacity and increasing storage management overhead. In addition, working with virtualized environments means that backup processes have to change or they become hard to manage. Some companies struggle to adequately manage their backup, leaving their valuable data vulnerable to corruption or loss.

## An End-to-End Solution

AccuGuard is a comprehensive software solution for backup and disaster recovery for small and medium-sized businesses, remote offices, workgroups and home office users. With built-in bare metal recovery functionality, restores can be started at the operating system level. File servers, network shares and application servers such as Microsoft SQL and Microsoft Exchange can be included into the backup strategy with the integrated agents. The email notification capability informs the administrator about the status of the backup job.

## Easy and Fast Restore

Data retrieval is simple and painless with AccuGuard's flexible file searching, drag-and-drop restore and point-in-time disaster recovery. For restore, the administrator can choose from different backup dates to recover a specific version of a file or group of files. Full restores can be initiated as usual.

## Data Deduplication

AccuGuard's deduplication engine is executed on each protected client before it is transferred and stored. This reduces network traffic, increases backup storage capacity, allows more recovery points to remain online and drastically improves backup windows.

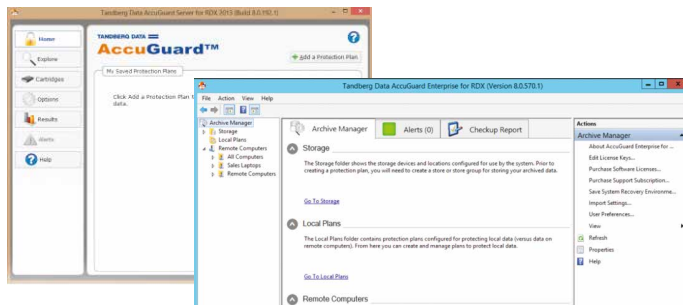


## Key Benefits

- Automated Data Protection**  
 Set it and forget it data protection with automated verification that ensures every file is saved correctly and without corruption
- 20:1 Data Deduplication**  
 Source-based deduplication for efficient storage utilization and network bandwidth optimization
- Integrated Microsoft SQL & Exchange Protection**  
 Specialized plans provide full protection with optimized data reduction
- Simple User Interface**  
 Removes frustration associated with traditional backup software
- Bare Metal Recovery**  
 Completes system restores from scratch
- Point-in-Time Recovery**  
 Selectable recovery-points from a calendar view
- Variable Data Retention**  
 Defines number of recovery points to be kept
- Email Notification**  
 Provides information about backup success via email
- RDX Media Management**  
 Simplifies media management for off-site storage and archiving
- Browsable Backups**  
 Enables searches down to the version level for quick file discovery
- Drag-and-Drop Restore**  
 Streamlines file recovery by eliminating the need to run a "Restore Job"

An easy-to-use GUI helps to configure, manage and control backup jobs and recovery processes. A comprehensive help menu provides users with instructions and guidance. Results of backup jobs can be viewed in a log file and as graphical charts and can be sent via email.

There are two AccuGuard versions available. **AccuGuard Server for RDX** works with Tandberg Data's RDX® QuikStor™ and RDX® QuikStation™ and protects a single server or workstation. **AccuGuard Enterprise for RDX** protects multiple local and remote servers\* and workstations\* on RDX, local disks and network shares. The source-based deduplication allows fast backups even on slower networks. Along with RDX removable media, data seeding is supported for large data sets providing even faster backup and restore scenarios. In addition, AccuGuard Enterprise for RDX supports multiple target backups. So, RDX can be used for off-site protection and disaster recovery with a backup to disk to RDX data security scheme.



| Specifications                            |  |   |
|---|--|---|
| Feature                                   | AccuGuard Server for RDX   | AccuGuard Enterprise for RDX  |
| Source-Based Deduplication                | ✓  | ✓   |
| Global Deduplication                      |  | ✓   |
| Single System Protection                  | ✓  | ✓   |
| Multiple System Protection                |  | ✓   |
| Multiple Backup Jobs                      | ✓  | ✓   |
| Bare Metal Recovery                       | ✓  | ✓   |
| Exchange Protection                       | Microsoft Exchange Server 2003/2007/2010/2013  | Microsoft Exchange Server 2003/2007/2010/2013   |
| SQL Server Protection                     | Microsoft SQL Server 2005/2008/2008R2/2012/2014  | Microsoft SQL Server 2005/2008/2008R2/2012/2014   |
| Backup of Network Shares                  | ✓  | ✓   |
| Extensive Scheduler Options               | ✓  | ✓   |
| Backup to RDX                             | ✓  | ✓   |
| Media Rotation                            | ✓  | ✓   |
| Point in Time Recovery                    | ✓  | ✓   |
| Single File Recovery                      | ✓  | ✓   |
| Histories and Event Logs                  | ✓  | ✓   |
| Email Notification                        | ✓  | ✓   |
| Backup to any Disk                        |  | ✓   |
| Backup to Network Shares                  |  | ✓   |
| Agentless Software Distribution           |  | ✓   |
| Multi Stores Support and Group Management |  | ✓   |
| Multiple Backup Targets                   |  | ✓   |
| Backup Copy Jobs                          |  | ✓   |
| Variable Data Retention                   |  | ✓   |
| Export of Settings and Histories          |  | ✓   |
| <b>System Requirements</b>                |  |   |
| Operating Systems Server*                 | Windows Server 2003 (32-bit, 64-bit), 2008 (32-bit, 64-bit), 2008 R2, 2012, 2012 R2<br>Microsoft Small Business Server 2003 / 2003 R2 / 2008 / 2001 / 2012 Essentials<br><i>Windows Server 2008 R2 is recommended for AccuGuard Enterprise for RDX Backup Server</i> |   |
| Operating Systems Desktop*                | Windows XP, Vista, Windows 7, Windows 8, Windows 8.1, Windows 10   |   |
| Processor and Memory                      | Single 2.0GHz CPU minimum, works with multiple processor cores, 4GB Ram  |   |
| Free Disk Space                           | 60MB for product installation plus<br>as much storage space as the size of<br>the largest file to be backed up,<br>plus enough space on RDX backup-media   | 8MB per backup process on the system to be backed up,<br>100-200MB free disk space is recommended, plus enough<br>backup space on Backup Server (if backing up to<br>internal disk first) or on your RDX backup-media |
| RDX Drive                                 | At least one RDX Drive has to be connected to the backup server  |   |

\*additional licenses are required for add on servers and desktops

DS-AccuGuard\_US\_2015D

**North America**  
125 S. Market Street  
San Jose, CA 95113  
USA  
Tel: (858) 571-5555  
Fax: (585) 571-3664

**Asia Pacific**  
16 Collyer Quay  
Level 21  
Singapore, 049318  
Tel: (65) 6818 9266  
Fax: (65) 6818 9601

**France**  
18 Rue Jean Rostand  
Orsay  
91400, France  
Tel: (33) 1 81 91 73 40

**Germany**  
Feldstrasse 81  
44141 Dortmund  
Germany  
Tel: (49) 231 5436-0  
Fax: (49) 231 5436 - 111

**United Kingdom**  
Regus Atlantic House  
Imperial Way  
Reading, RG2 0TD  
Tel: (44) 1 189 89 8000  
Fax: (44) 1 189 89 1897